



## MAINTENANCE INSTRUCTIONS

### WISA®-Pro Oiled Floorings

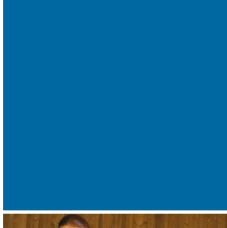
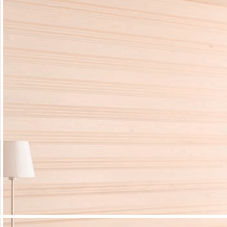
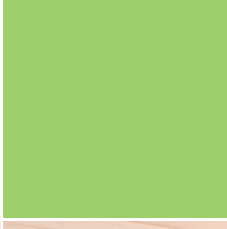
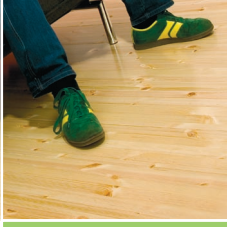
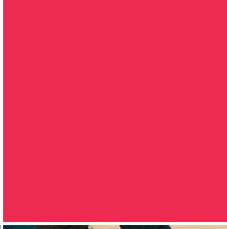
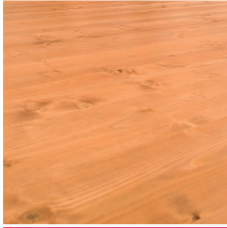
#### Cleaning after installation

Floors treated with Osmo Hardwax-Oil are delivered ready for use. After installation, remove all loose dust or dirt with a broom or vacuum cleaner. If the floor is very dirty, it can be wiped/mopped clean with a damp (not wet) cloth, using Osmo Wash and Care in the water. Then apply a thin layer of Osmo Liquid Wax Cleaner to the dry, clean floor and polish it after drying with a low-speed one-disc machine (RPM < 500) equipped with a white pad. For smaller surfaces an absorbent, soft cloth will be sufficient. If the correct quantities are used, one tin of Osmo Liquid Wax Cleaner will cover at least 100 m<sup>2</sup> = 2 teaspoonfulls for approx. 1 m<sup>2</sup>.

#### Normal cleaning and maintenance

For normal cleaning purposes a mop, broom or vacuum cleaner is sufficient. If the floor is very dirty, it can be wiped/mopped clean with water (damp, not wet) containing Osmo Wash and Care. The floor should then be dried immediately with a dry cloth in order to avoid wetness penetrating into the joints.

Remove tough stains with Osmo Liquid Wax Cleaner (use an Osmo Polishing Pad, or for oak floors a Scotchpad) and polish the floor. From time to time the floor should be maintained with Osmo Liquid Wax Cleaner, particularly the most-used and most frequently cleaned areas (apply a thin layer, let it dry and then polish it). If floor renovation is necessary, treat the cleaned surface with Osmo Hardwax-Oil. One application is sufficient under normal circumstances. Partial floor renovation is also possible.



## In public buildings (offices, shops, schools, restaurants)

Wipe/ mop the floor daily, or as frequently as you require, with a damp (not wet) cloth. Please use Osmo Wash and Care in the water to avoid lime deposits forming from the water. The floor should then be dried immediately with a dry cloth in order to avoid wetness penetrating into the joints.

Depending on the level of floor traffic, the floor should undergo full maintenance up to 4 times a year, or as frequently as you require, using Osmo Liquid Wax Cleaner. Apply a thin layer with a low-speed one-disc machine (RPM < 500) using a beige pad. Leave to dry for about 2 hours. When dry the floor may be polished with a low-speed one-disc machine (RPM < 500) using a white pad.

- Approx. once a year, or as frequently as you require, Osmo Hardwax-Oil should be used after the initial treatment.
- Partial floor renovation is also possible.
- In order to avoid scratches, felt pads should be used under all furniture, especially chairs and armchairs. A standard protective mat should be used under office chairs with wheels.
- Please do not use any household detergents containing abrasive substances. Put a floor mat of sufficient size (at least 80 x 100 cm) in the entrance area.

## Instructions for coloured surfaces

To prevent pigment deterioration and changes in the colour shades of coloured surfaces, use Osmo Hardwax-Oil and Liquid Wax Cleaner regularly on these surfaces. If the pigments remain undamaged, it should be easy to renovate the floor using Osmo Hardwax-Oil 3062 after thoroughly cleaning the floor area. If the pigments have already deteriorated, we recommend that you partially sand the surface (final sanding similar to the original sanding of the surrounding).

- **White:** first apply 1 coat of Osmo Wood Wax Finish Opaque White 3112 very thinly and wipe off with a cloth to achieve the same colour shade as the rest of the surface. Then apply 2 coats of Osmo Hardwax-Oil 3062 with a cloth or brush. Leave to dry for about 12 hours after each application.
- **Dark colours:** apply 1 coat of Osmo Wood Wax Finish Transparent in the corresponding colour shade very thinly and wipe off with a cloth to achieve the same colour shade as the rest of the surface. Finally apply 2 coats of Osmo Hardwax-Oil 3062. Leave to dry for about 12 hours after each application.

Special skills are required to partially repair transparent stained floors without leaving any repair marks. It is important to overlap the new coat and the old in order to blend in the pigments and obtain a satisfying result. Where the floor is badly worn, we recommend sanding the whole floor area rather than attempting a partial renovation.