

WE LEAD.  
WE LEARN.



## WISA®-FORM BETO

**WISA-Form Beto is a coated special plywood for use in slab loose panel concrete formwork.**

### Base board

Mirror construction plywood made from birch and spruce veneers bonded together in a cross banded construction.

### Bonding

Phenolic resin cross-bonded weather resistant glueing according to EN 314-2/ class 3.

### Surface and edges

**Face and reverse:** Dark brown phenolic film 120 g/m<sup>2</sup>.

**Imprinted text:** "WISA-Form BETO".

**Edge sealing:** Water resistant paint.

### Thicknesses and weight

Nominal thickness (mm)	Number of plies	Min. thickness (mm)	Max. thickness (mm)	Weight (kg/m <sup>2</sup> ) (MC 10%)
15	9	14.3	15.3	8.7
18	11	17.1	18.1	10.4
21	11	20.0	20.9	12.2

### Panel size

1220/1250 x 2440/2500 mm

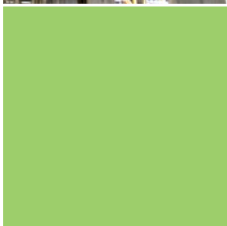
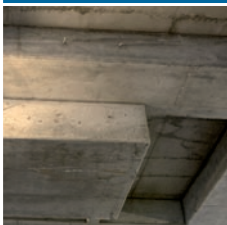
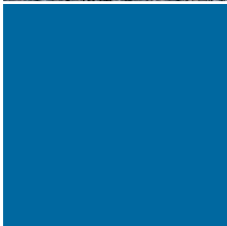
Size tolerance (length/width) ±1 mm per metre

Squareness tolerance ±1 mm per metre length of diagonal

### Reuses

Typical number of reuses is likely to be in the range of 10 -15 times. However the number of reuses will depend on a wide range of factors including good site practice, the required concrete finish, careful handling & storage of forms and the type and quality of release agent.





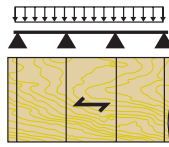
## Design data

Mechanical properties of WISA-Form Beto, in standard thicknesses, moisture content  $10 \pm 2\%$

Nominal thickness (mm)	Mean modulus of elasticity bending (N/mm <sup>2</sup> )		Characteristic strength bending (N/mm <sup>2</sup> )	
	EmII	EmI-	fmlI	fml-
15	8763	6490	35.0	23.3
18	7864	7158	31.5	25.3
21	7621	7338	30.5	25.3

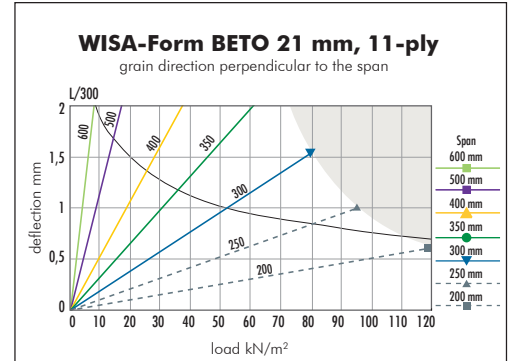
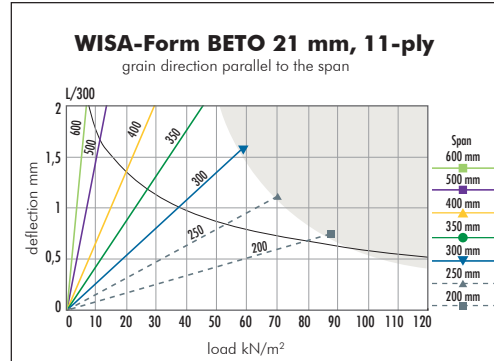
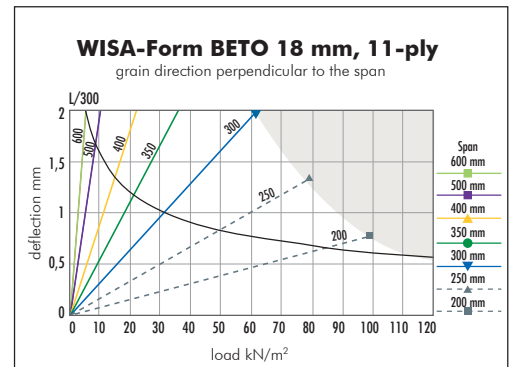
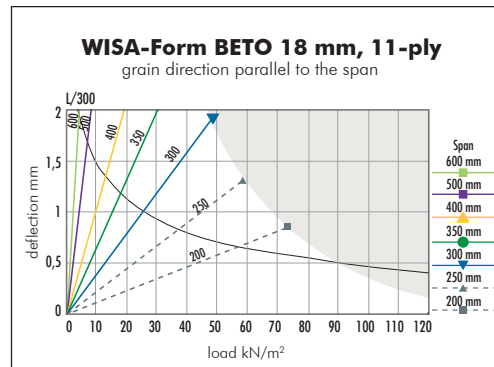
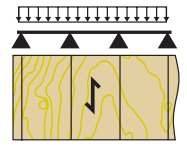
**Face grain parallel to the span ( I I )**

← grain direction of surface veneers



**Face grain perpendicular to the span ( I - )**

← grain direction of surface veneers



Moisture content 27 %, short time loading

Partial safety factor for the material is 1.3. Partial safety factor for the loads is 1.2.

Deflection limit L/300 of the span

Support width is not taken into account in calculations

### Instructions for use

See "Site guidance note for WISA-Form plywood" available from UPM.

UPM policy is one of continuous development. We reserve the right to amend specifications without notice or obligation.



Niemenkatu 16  
P.O. Box 203  
FI-15141 Lahti  
Finland

Tel. +358 20 415 113  
Fax. +358 20 415 6347

www.wisa.com  
www.upm-kymmene.com