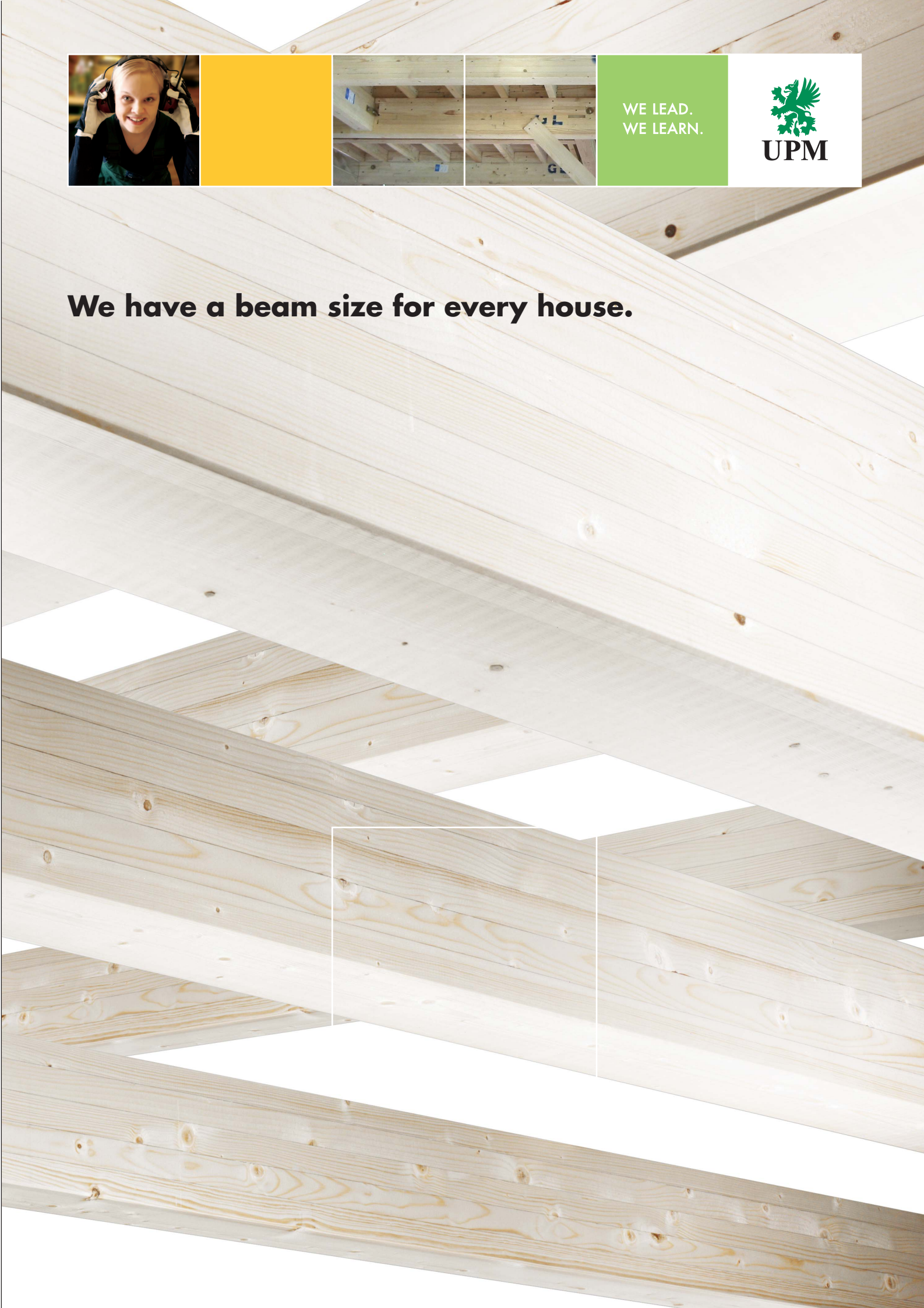


We have a beam size for every house.





PEFC

- Programme for the Endorsement of Forest Certification Schemes.

- Provides a framework for the development of and mutual recognition of national or sub-national forest certification schemes that have been developed locally according to internationally recognised requirements for sustainable forest managements. Products with the PEFC logo contain wood originating from PEFC-certified forests.

- Provides an assurance mechanism to purchasers of wood and paper products that they are promoting the sustainable management of forests.

- Contributes to the environmentally appropriate, socially beneficial and economically viable management of forests for present and future generations.

Raw material for WISA-Beam comes from a clearly defined geographical area in Western Finland where the best Nordic spruce is grown. From there on we handle the whole production chain from raw material to finished end product. That way the requirements of our customers are taken into account from end to finish.

WISA-Beam is a high-quality, strength graded timber product. Thanks to its strength and stiffness properties, Finnish spruce is the best quality choice for roof beams. WISA-Beam has visual and mechanical strength grading according to standards.

All sizes up to 6 metres

Our new, highly automated factory can produce all sizes for all needs in construction by using the latest, up-to-date technology. Cut-to-size products are available up to 6 metres. Our customers reach time and raw material savings with our precision end trimmed lengths.

WISA-Beam is backed by a sales and logistics network that stretches across Japan. We can deliver all sizes easily to a factory or to a dealer near you. A team of proven experts, the widest range of Nordic timber beams and a complete service package are an unbeatable combination.

WISA-Beam is certified in accordance with JAS. It also has a right to use PEFC logo.

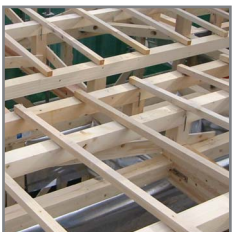
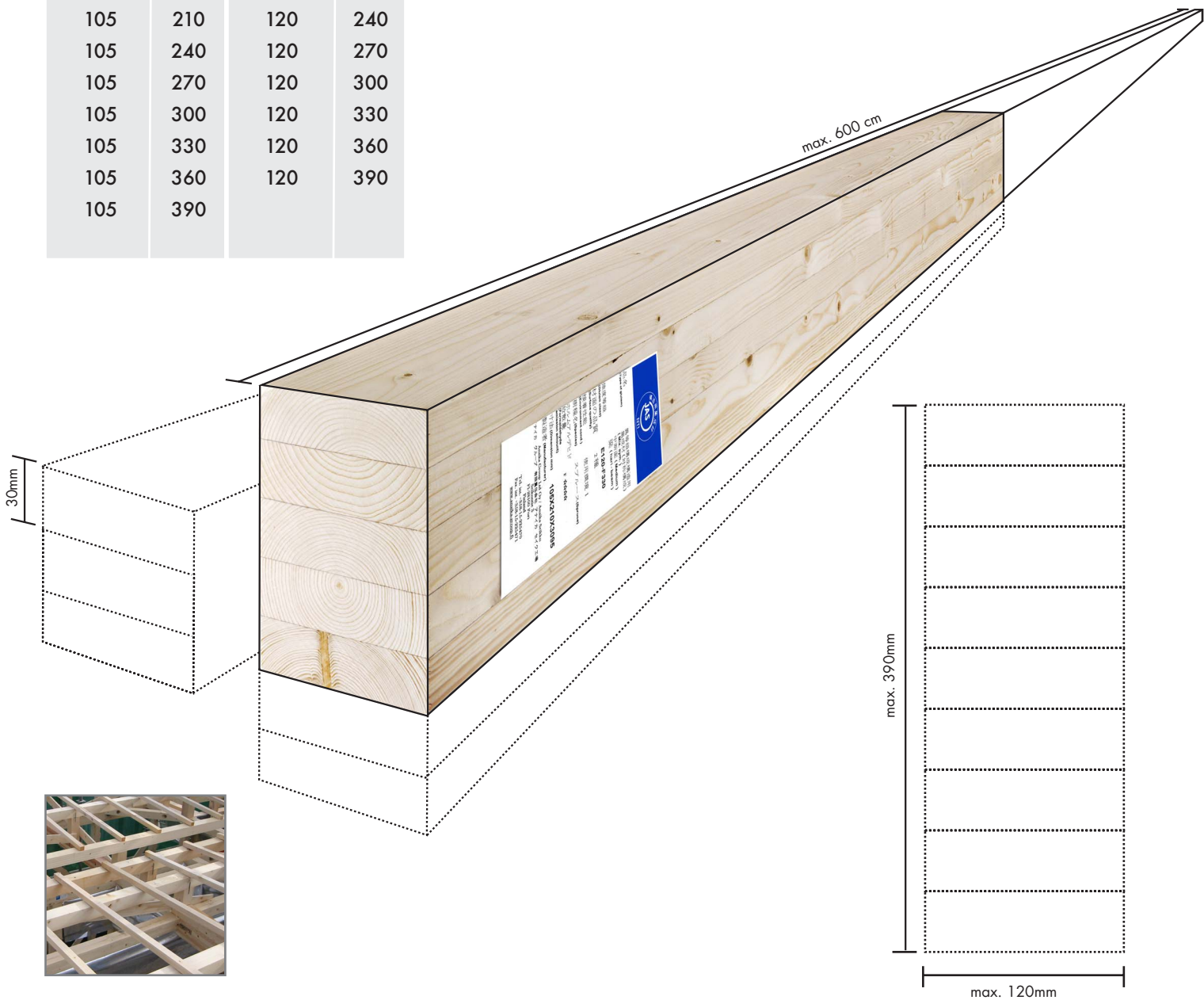


JAS NTI	
品名 (Type of glulam)	異等級構成構造用 集成材(対称構成) (Mix. sym.) 中断面 (Medium) 梁 (hari - beam)
強度等級 (Glulam class)	E120-F330
材面の品質 (Surface quality)	2種
接着性能 (Environment cond.)	使用環境 1
樹種名(Species)	スプルース(Spruce)
ホルムアルデヒド 放散量 (Formaldehyde emission amount)	F☆☆☆☆
寸法(Dimension mm)	105X210X3095
製造者 (Manufacturer) Anika Group Ltd Oy / Anika Seikku アイカ グループ 有限責任会社 アイカ セイク工場 Sikurinko 3 FI-28100 Pori Finland Tel. int. +358-15-225470 Fax. int. +358-15-225471 www.anika-group.fi	

- Anika Seikku WISA-Beam production
- Harvest area for WISA-Beam whitewood



Thickness	Width	Thickness	Width
105	105	120	120
105	120	120	150
105	150	120	180
105	180	120	210
105	210	120	240
105	240	120	270
105	270	120	300
105	300	120	330
105	330	120	360
105	360	120	390
105	390		





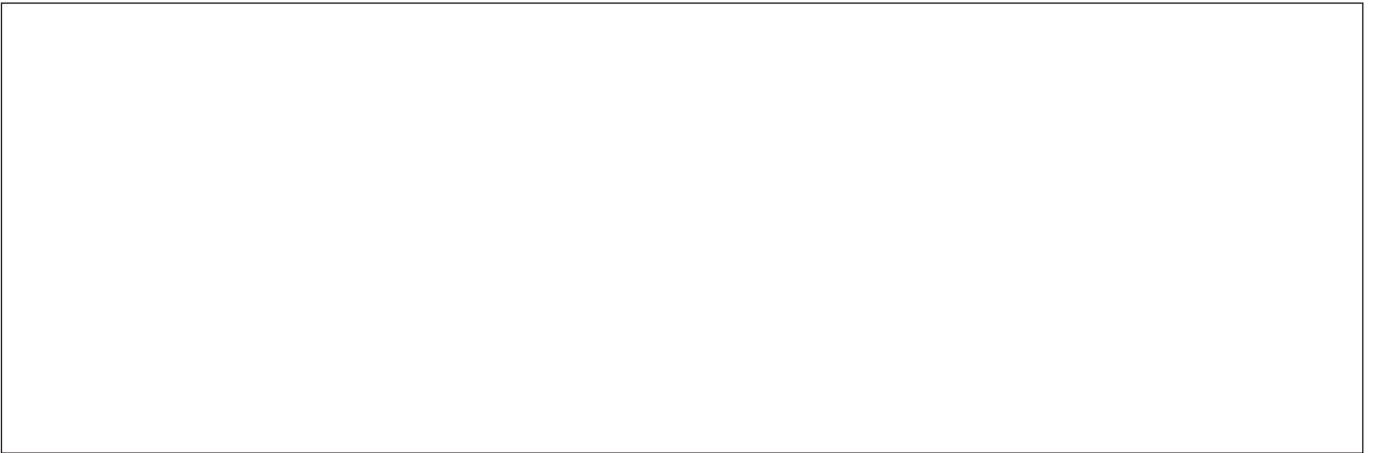
ENVIROMENT

Environmental protection and management are an integral part of UPM's activities. The group takes responsibility for observing the principles of sustainable development, as well as for continuous improvement of its environmental performance.

In its choice of raw materials, sources of energy and production processes, as well as in product development, an important objective is to minimize the impact on nature and the environment.

UPM has been working with wood for over a hundred and twenty years. We are proud of what we do and of our WISA® wood products. We believe we have some of the best wood excellence available, a superior range of the best quality products and the global presence to deliver them.

Distributor



UPM-Kymmene Japan KK
Sendai Branch Office
Jibralta Seimei Sendai Kotodai
B1dg
6F, 2-18-19, Honcho Aoba-ku
Sendai-shi, Miyagi 980-0014
tel: +81 22 726 6730
fax: +81 22 726 6731

www.wisa.com
www.upm-japan.com